

Distance learning

Online Examination guide.

Summary

1. Preface
2. Mechanisme
3. Requirements
4. Exam Setup

Authors

engr.Fares Younis Sh,
IT manager

engr.Rehab alshareef
Head of Study and exams office at the medicine faculty

Prof. Adel I.Ahmaida Al-tawaty
University Vice President for Science Affairs

Preface

- Definition:

The aim of this guide is to provide a practical technical methodology to achieve safe and well secured online examination following simple techniques combined all together to resolve global and domestic challenges related to the technical aspects in the processes of online examination at the libyan International medical university university.

The proposed solution have been tested in several faculties at the university to ensure its practicality. The solution consists of several systems integrated.

- Components:

the the solution is based over 3 main elements

- Moodle Examination Module:

is an activity module for Moodle. It allows the teacher to build quizzes with multiple choice questions based on the Quiz module. Main purpose of the Exam module is to improve the performance of quizzes and to reduce database overhead, so that a large number of users can attempt quizzes simultaneously.

Ref: https://moodle.org/plugins/mod_exam

- Safe Exam Browser:

is a web browser environment to carry out e-assessments safely. The software turns any computer temporarily into a secure workstation. It controls access to resources like system functions, other websites and applications and prevents unauthorized resources being used during an exam.

Ref: https://safeexambrowser.org/about_overview_en.html

- Google meet: Real-time meetings and a video communication service developed by Google, a meeting session held by the examiner or the exam supervisor.

Mechanisme:

- Overview

The examination is made by moodle exam modules with all preferences and configuration that are required, using Safe Exam Browser software to generate special key file for each exam the Safe Exam Browser runs on a local computer and it is connected via the internet to moodle, the main objective of Safe Exam Browser is to limit the usage of participant's computer so that only the exam window is allowed to be used and all other windows will be hidden, and disable all other functions. The monitoring and supervision of the participant while attempting the examination is made by using google meet application.

- Supervision

- Explore the surrounding environment of the student: ask the student to slowly recycle around the location in order to examine what is surrounding. Keep in mind to navigate horizontally and vertically the floor and the roof both have to be examined too.
- In case the student lost connection for any reason, the student will be able to return to the question that was navigating it, therefore it's highly recommended to arrange the exam via distributing the questions layout one question per page.
- Examination **time period** should not exceed 45 minutes to reduce the probability of technical obstacles.
- **Students** who are **wearing** anything that might be covering the head of the student like or their ears.
- Students should place the laptop or computer on a **table** that doesn't contain any drawers.
- The lighting should be bright enough for the supervisor to monitor even the eyeballs of the participant.

-

Requirements:

- Student:
 - Smart mobile phone to be used to monitor the student. Students install google meet application from google play or play store depending on the device brand to login using an institutional email address which is provided by the IT department.
 - Good **internet connection**, 4G connection using mobile phone is highly recommended as the phone remains running to provide internet connection on battery unlike the other sources that rely on electricity source which might not be stable or students might intensely switch it off.
 - Laptop computer or desktop with following minimum specification to guarantee the smoothness of the examination process:
 - 2-GHz processor or above.
 - 4 GB of RAM or above
 - 100 GB of hard disk space
 - 10" display or above
 - 800×600 pixels display resolution.
- Supervisor
 - Good **internet connection**, 4G connection using mobile phone is highly recommended as the phone remains running to provide internet connection on battery unlike the other sources that rely on electricity sources.
 - **Laptop** computer or desktop with following minimum specification to guarantee the smoothness of the examination supervision process:
 - 2-GHz processor or above.
 - 4 GB of RAM or above
 - 100 GB of hard disk space
 - 20" display or above
 - 800×600 pixels display resolution

Exam setup

The following instruction describe how to set up an examination using the methodology proposed.

Examiner Guide

First Create Quiz with Moodle

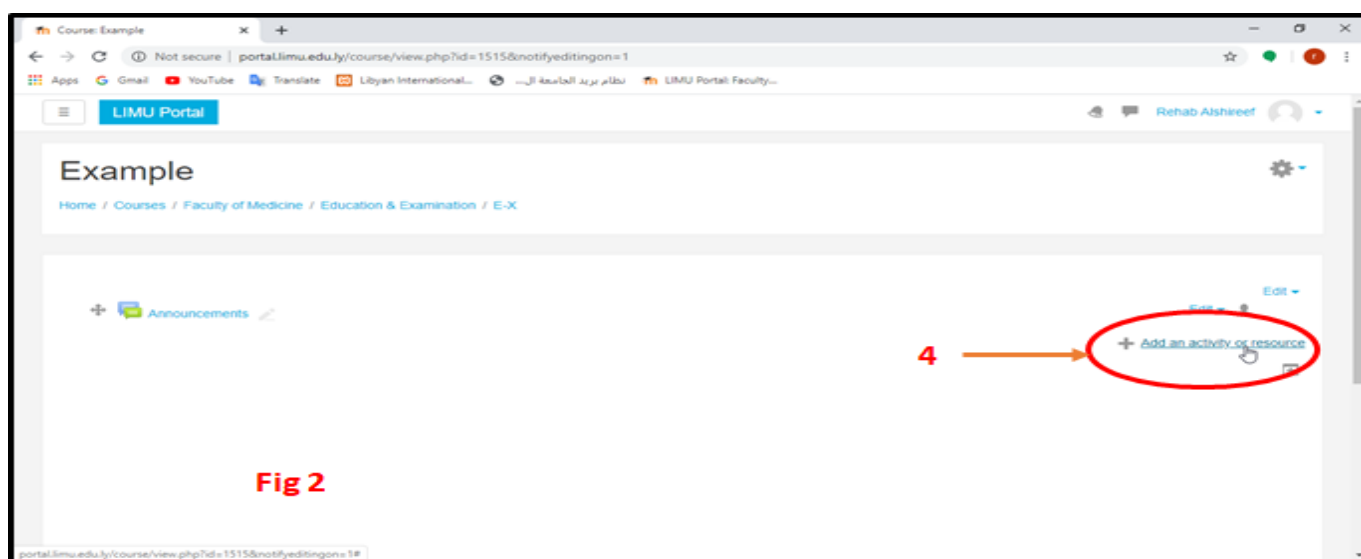
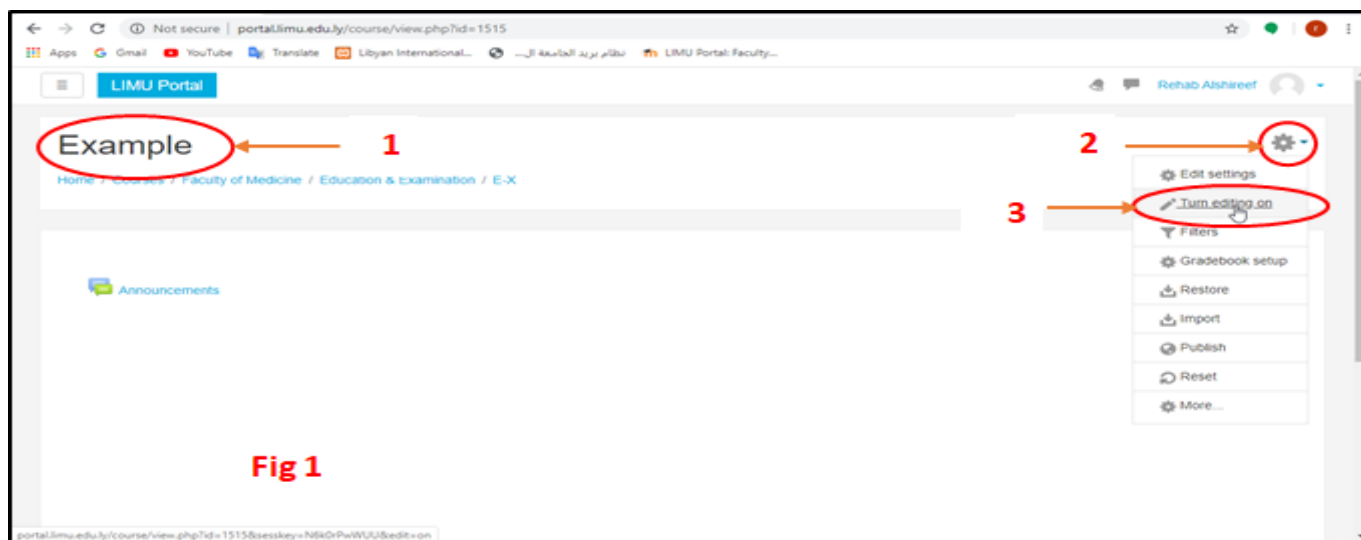
1- Enter to the course which you want to do quiz inside it, after that press on this

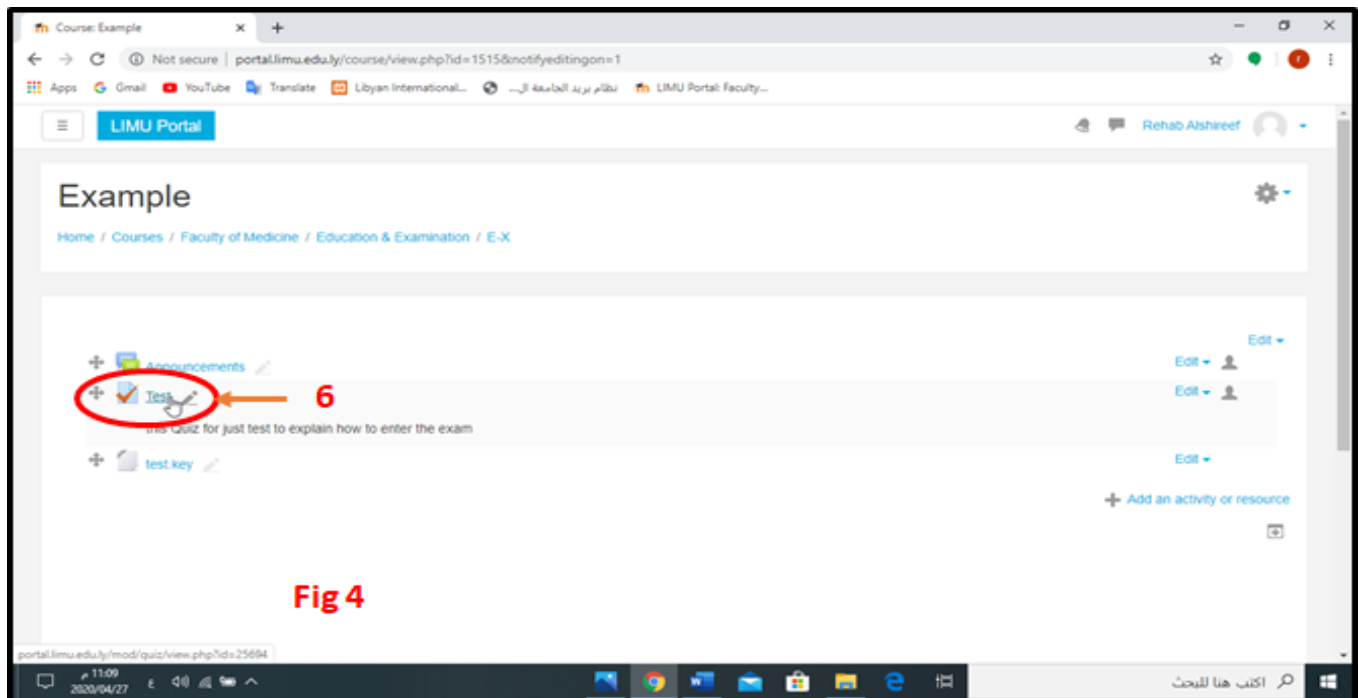
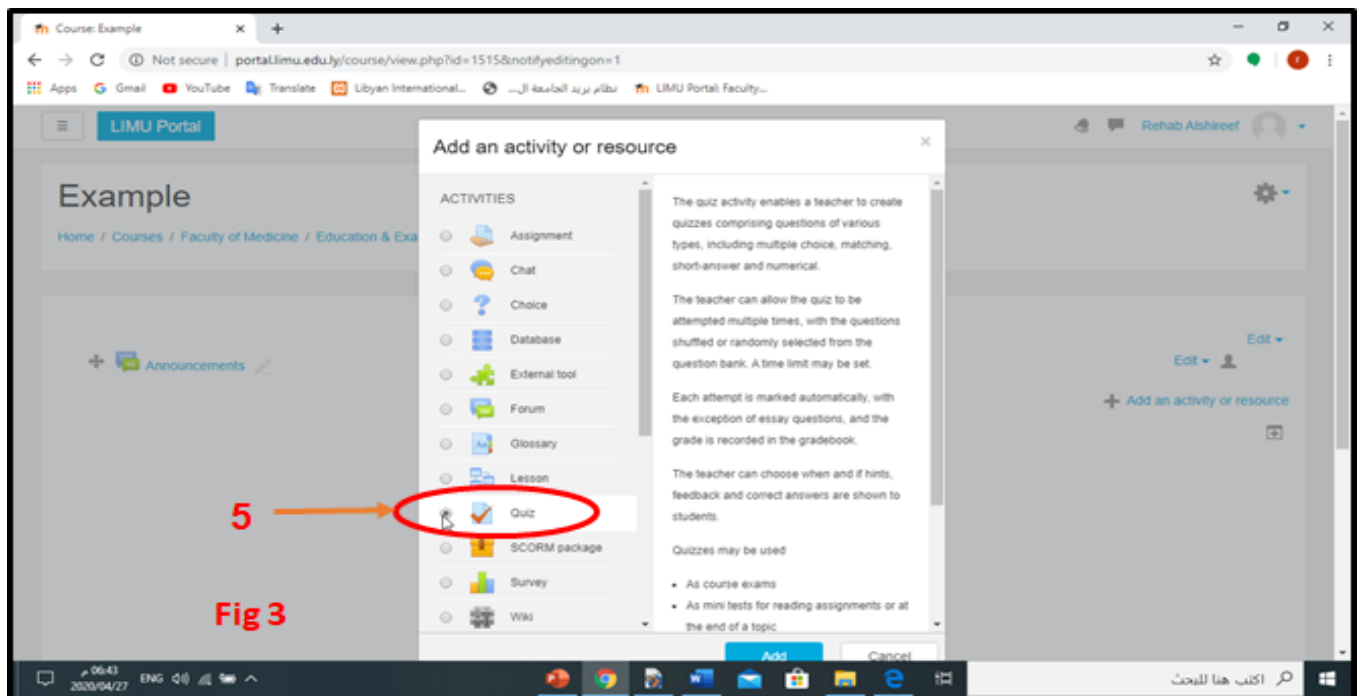
icon



Then choose from the list **Turn editing on**, after choose add an **activity or resources**

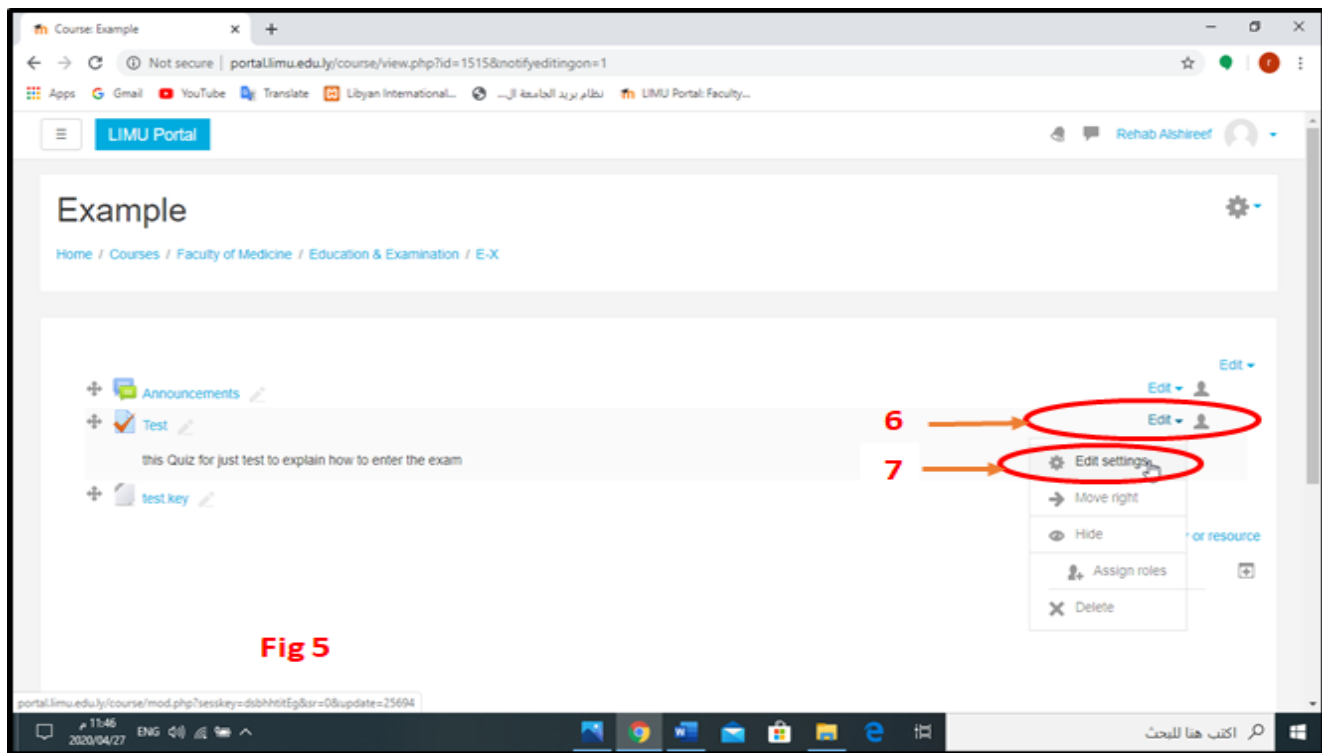
Then choose Quiz (fig 1, fig 2, fig 3, fig 4).



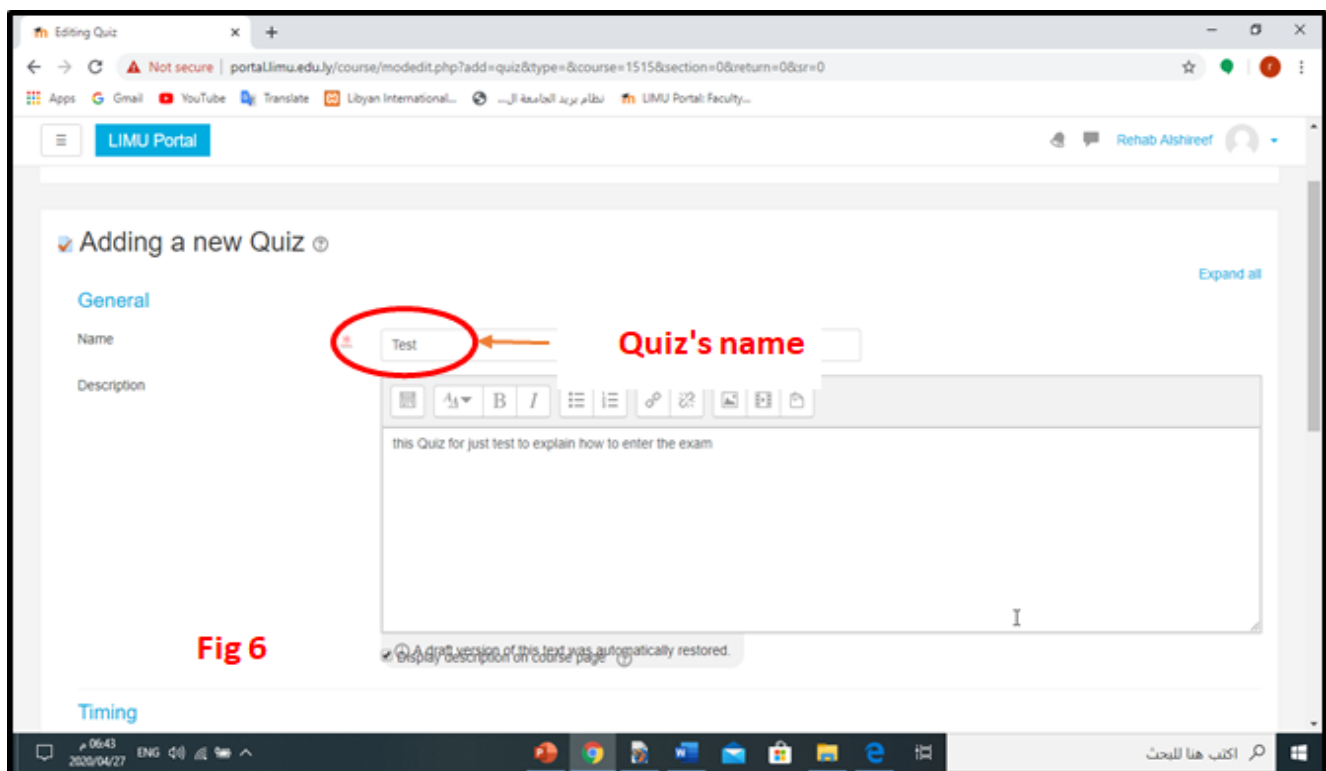


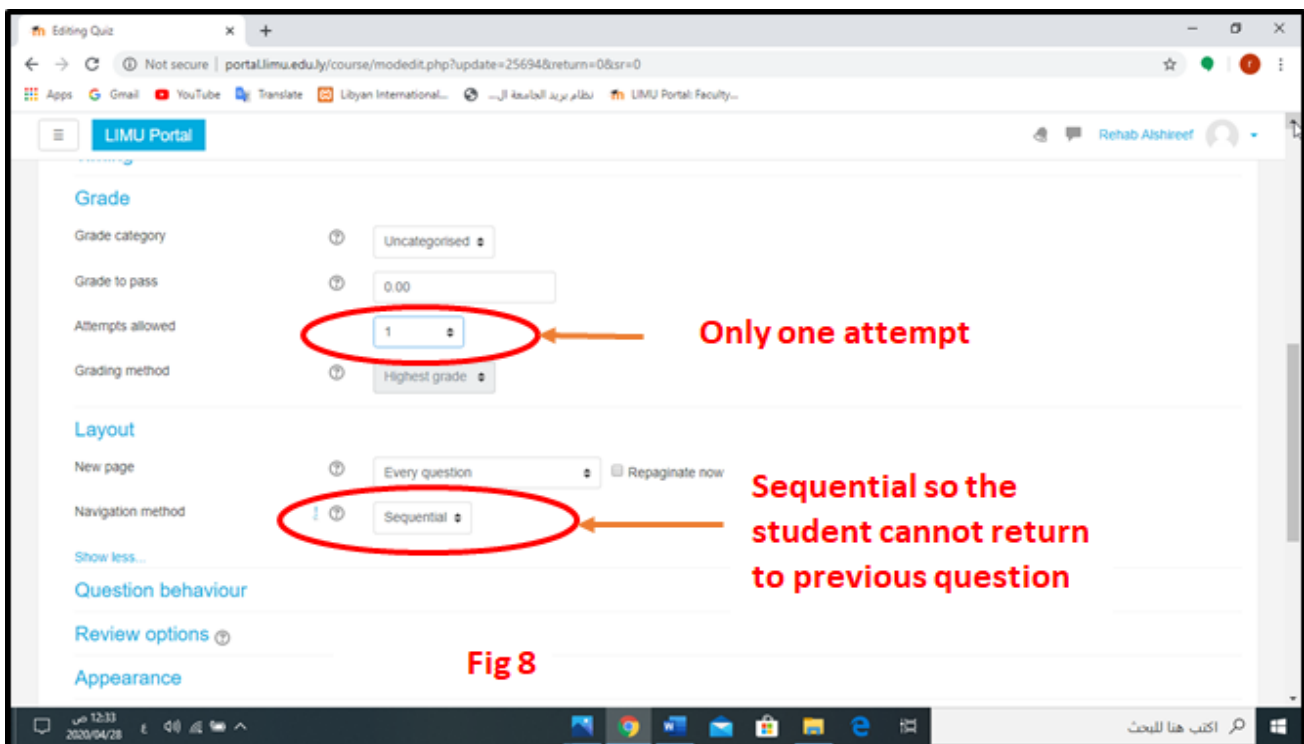
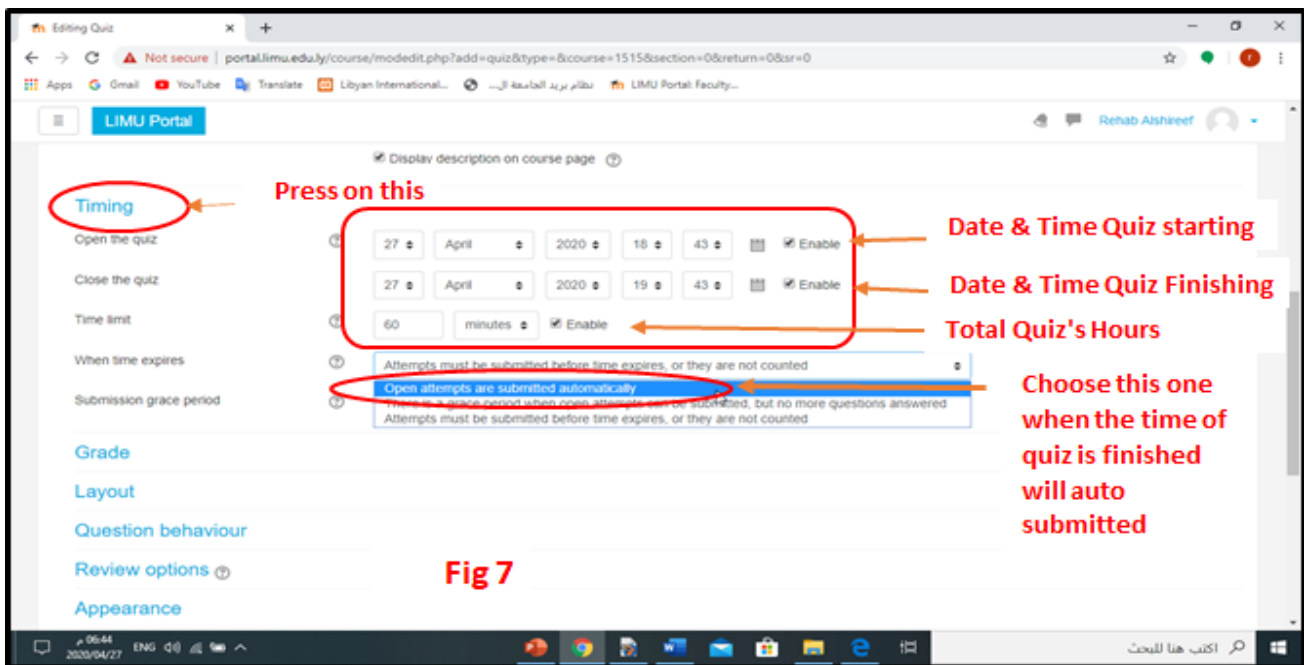
Now the exam will be prepared and set up, this step is very important.

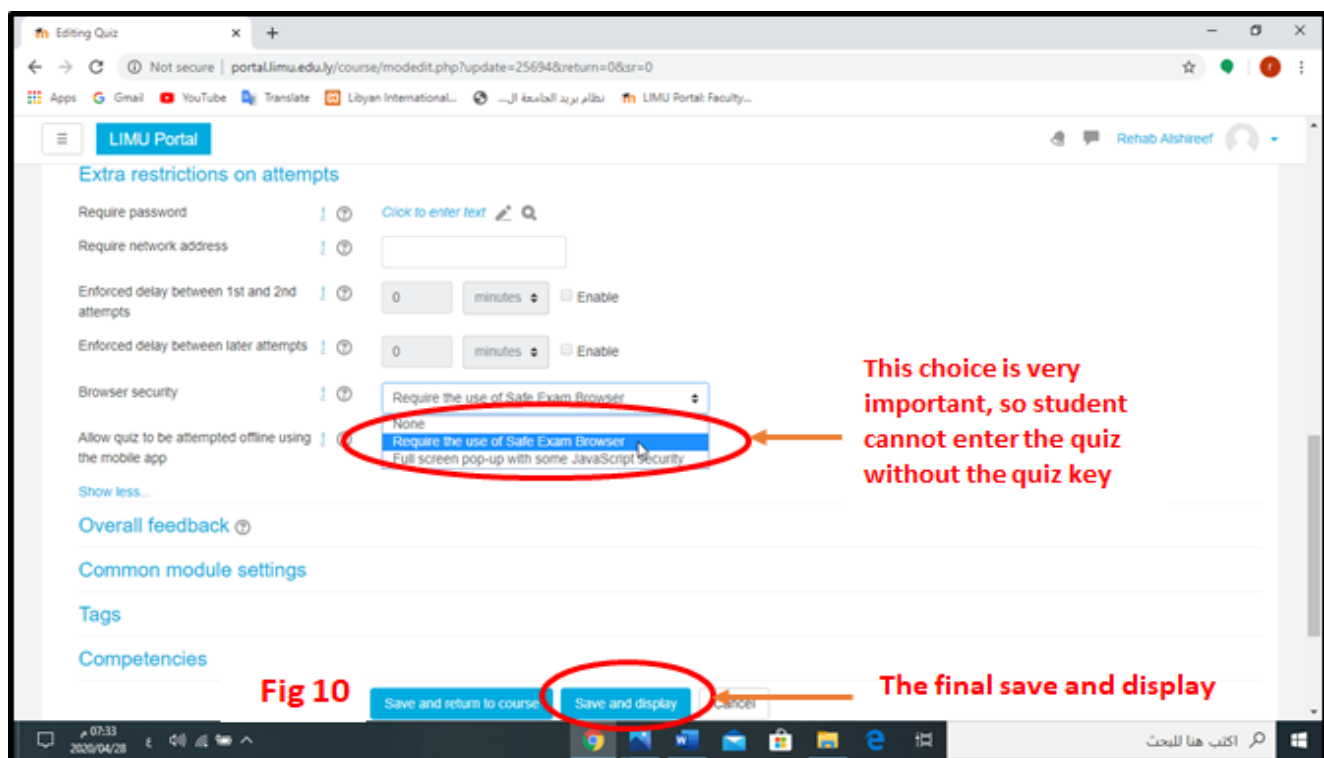
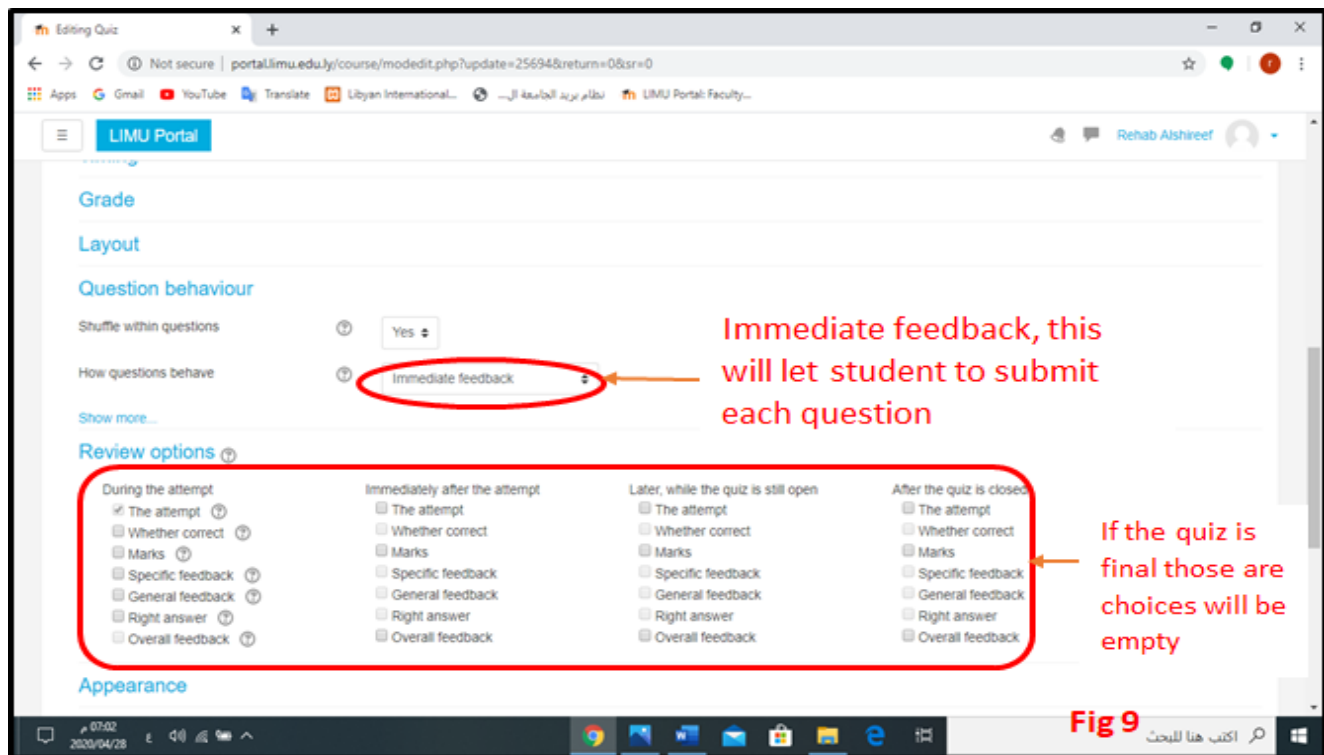
The explanation will be in figures

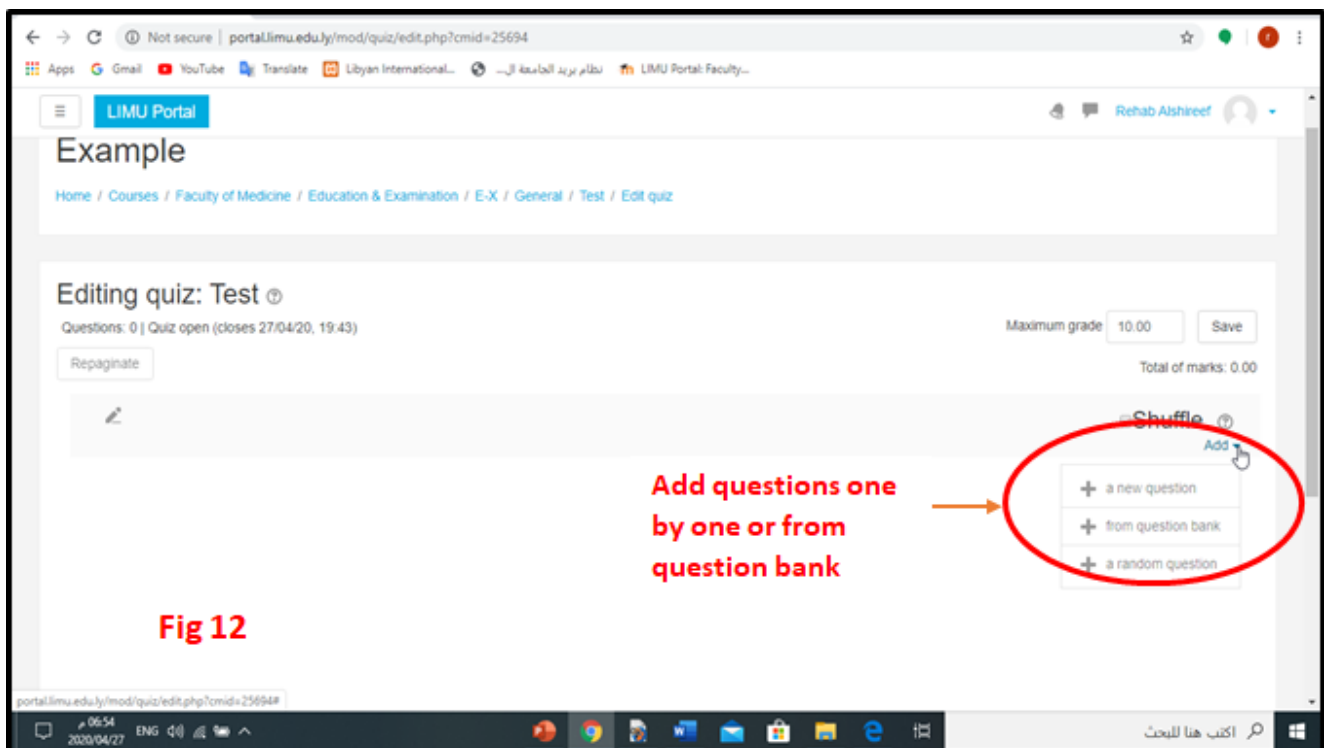
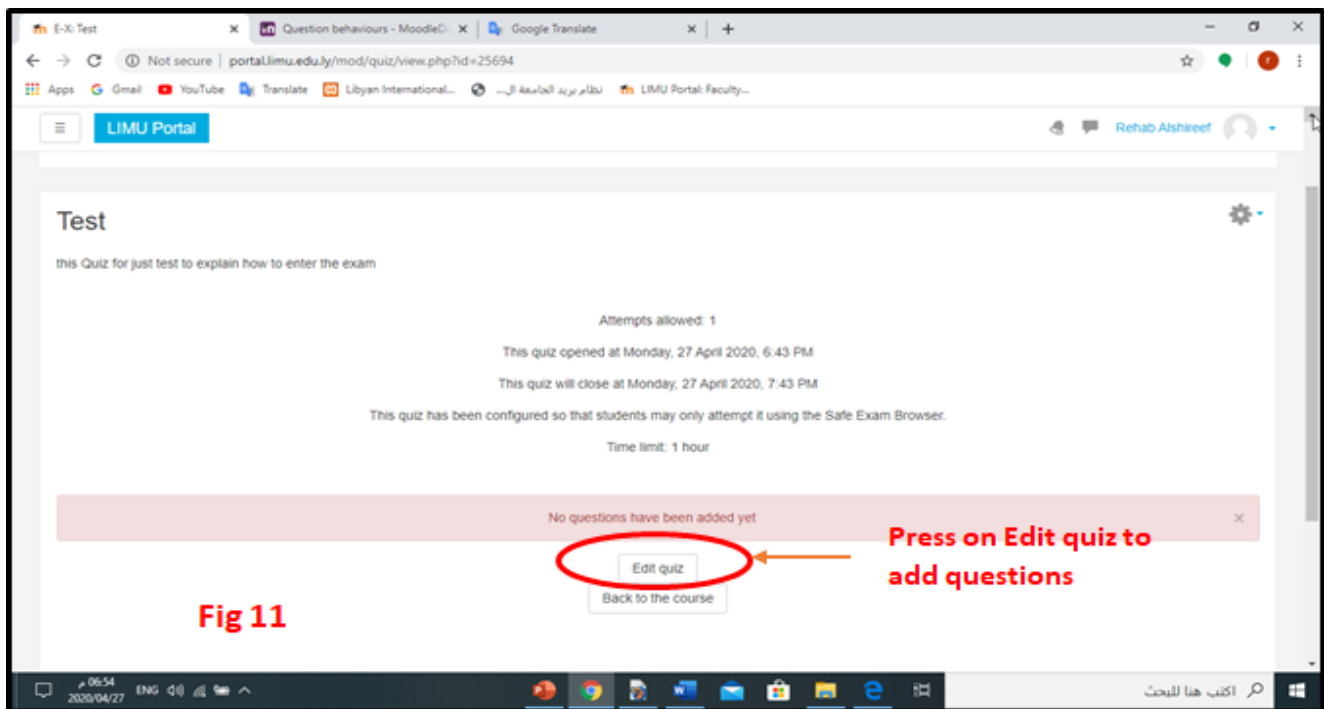


Explanation of exam settings from Figure 6 to Figure 12



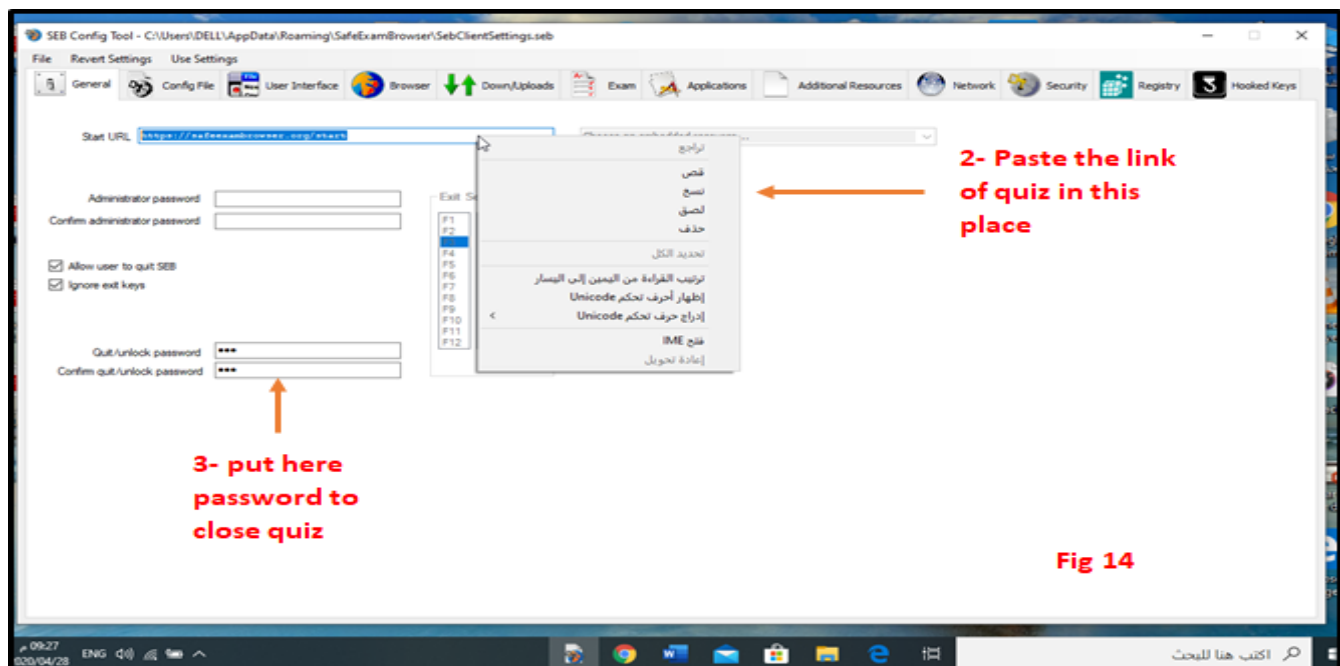
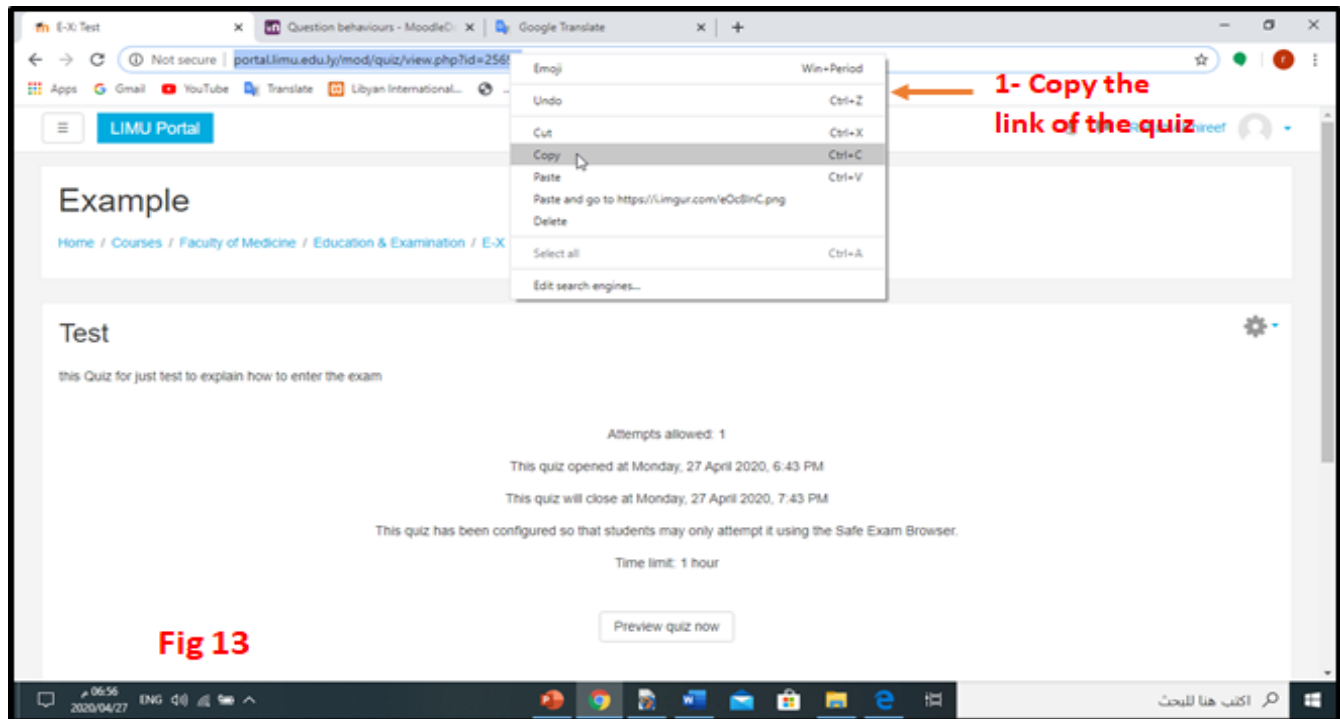


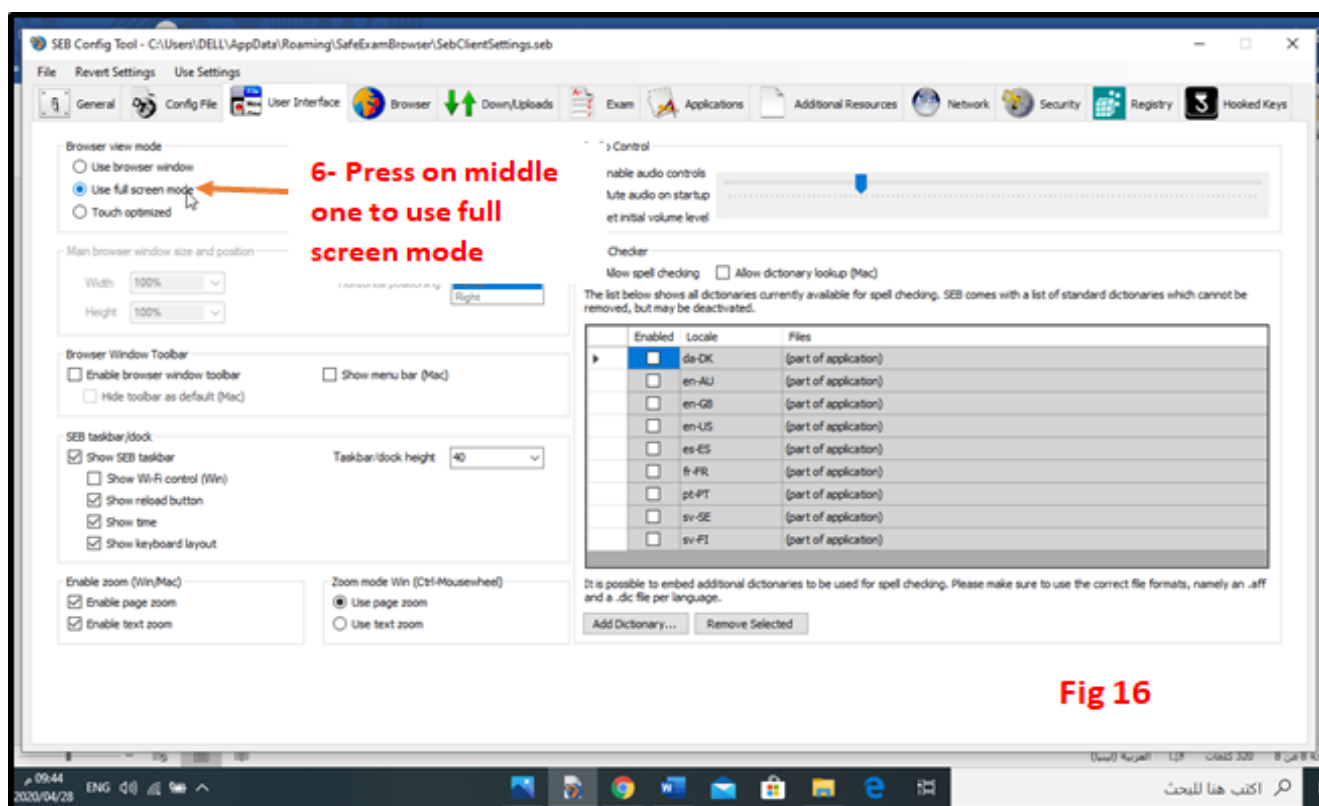
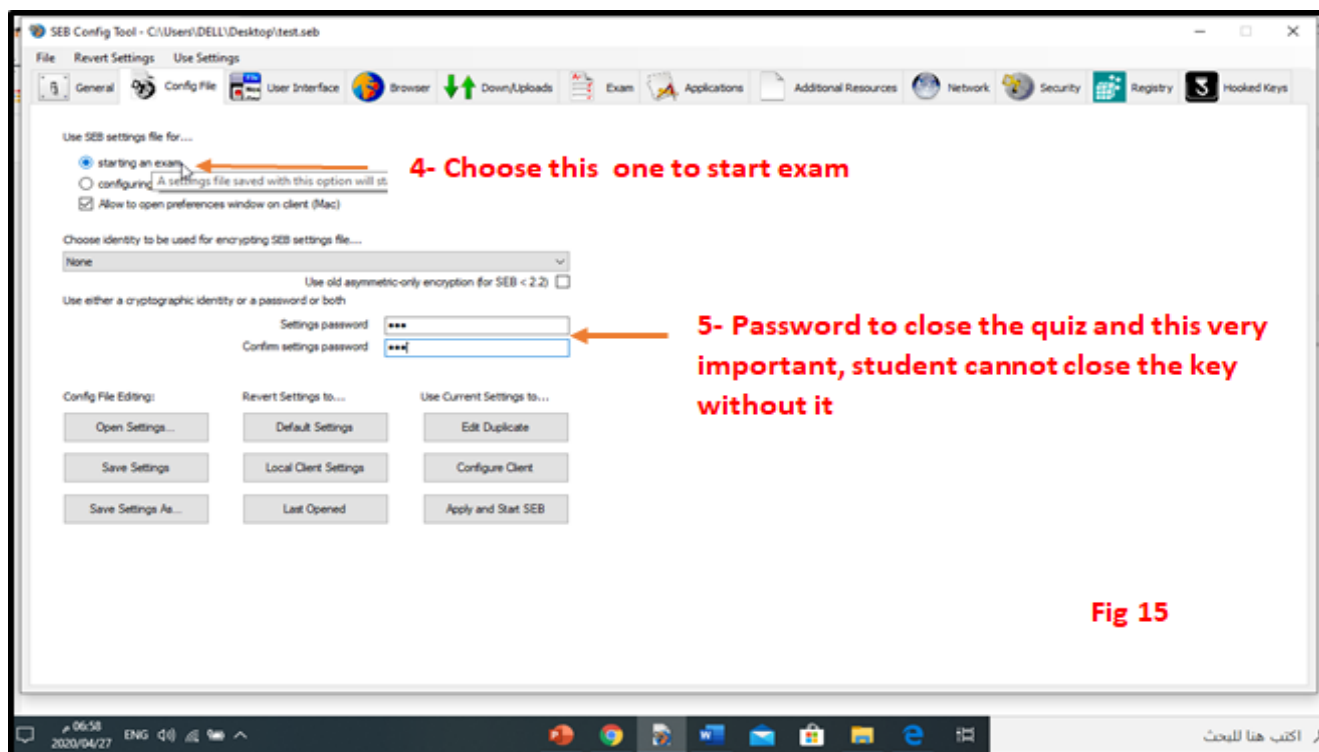




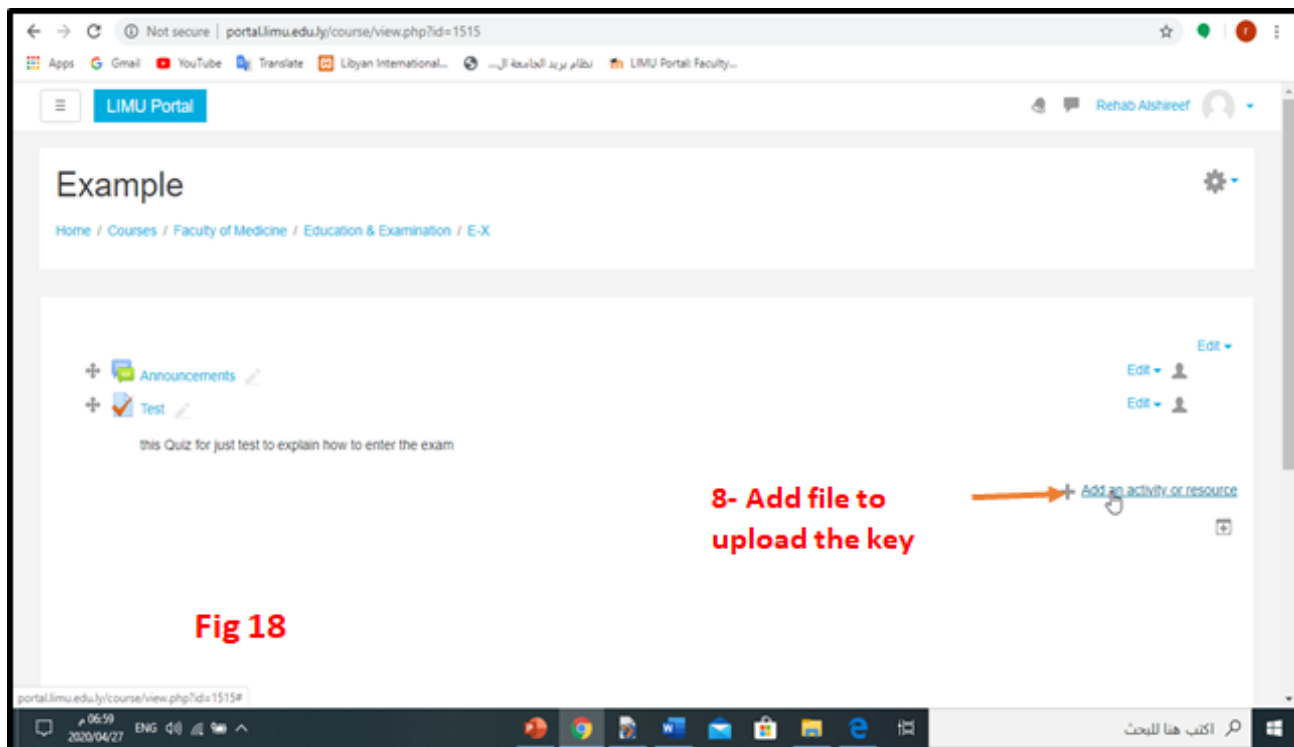
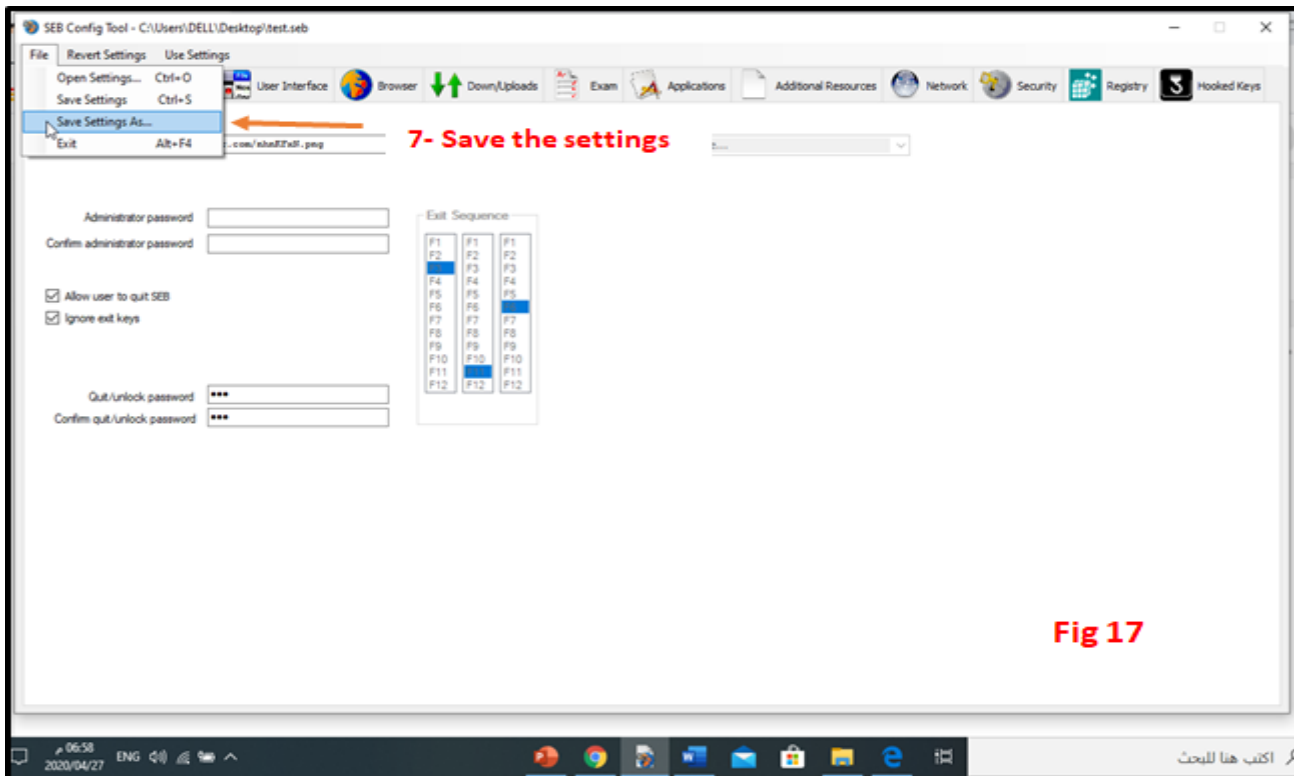
second step create the quiz's key by save exam browser

After download the save exam browser, open **SEB config tool** with this tool we will do quiz's key.





After we do all settings, will save



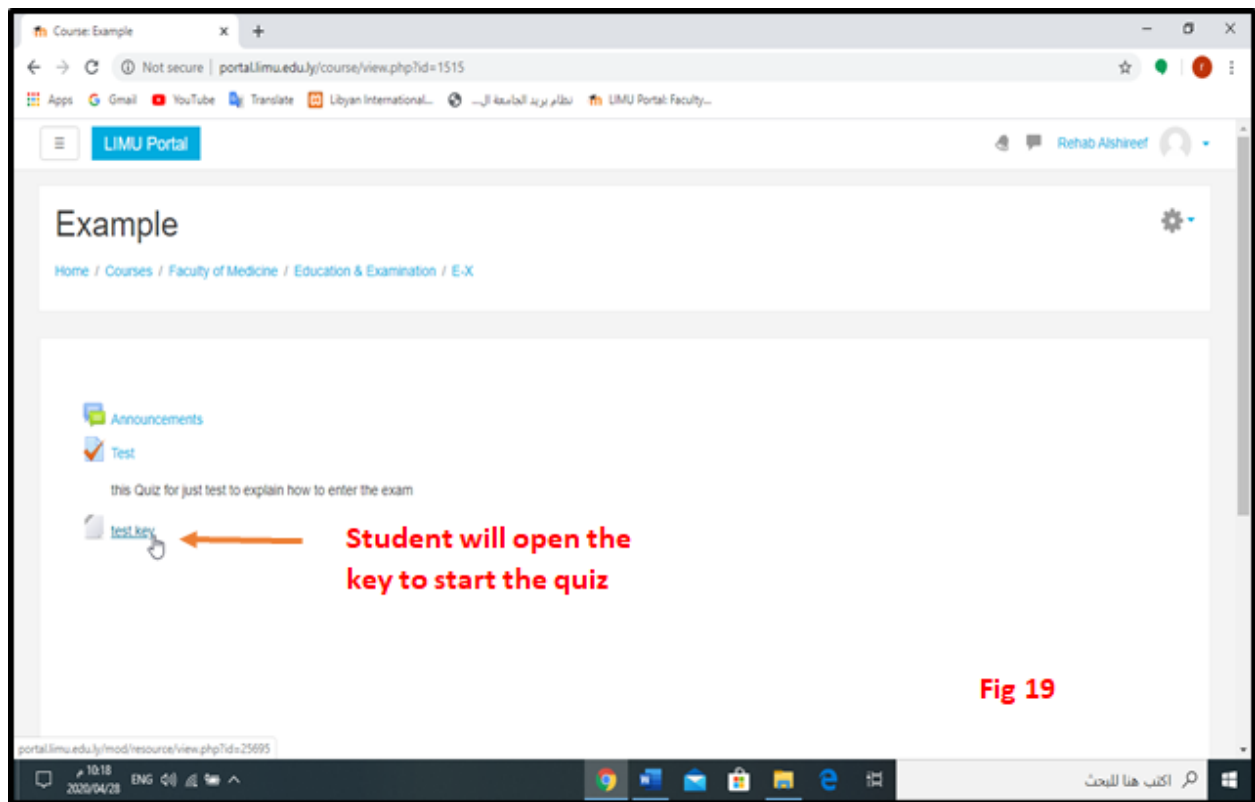
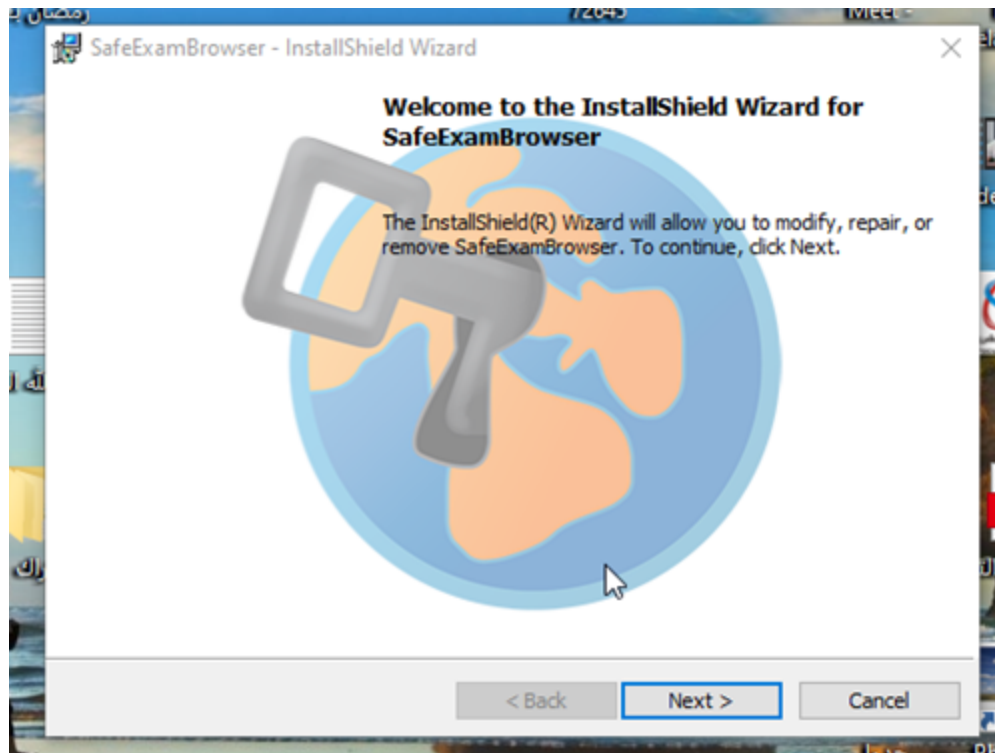


Fig 19

Student Guide:

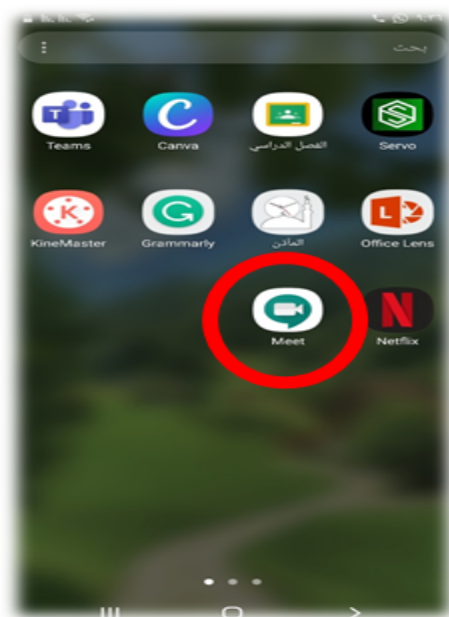
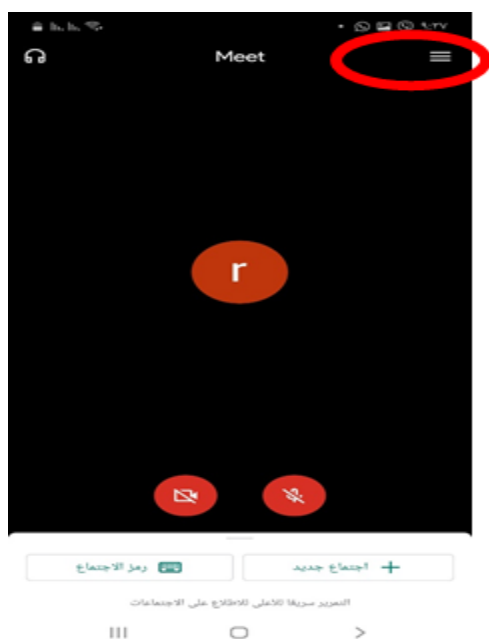
- 1- Download the save exam browser program on a computer from the link that was sent on the moodle The attached image of the program is pressed next until the appearance of finish The program does not open because this program opens the exam only It is necessary that it be loaded with the device to open the exam and thus we have finished Prepared from the Computer.



2- Download the university email on the mobile (open gmail) and the e-mail is added, as Follows:



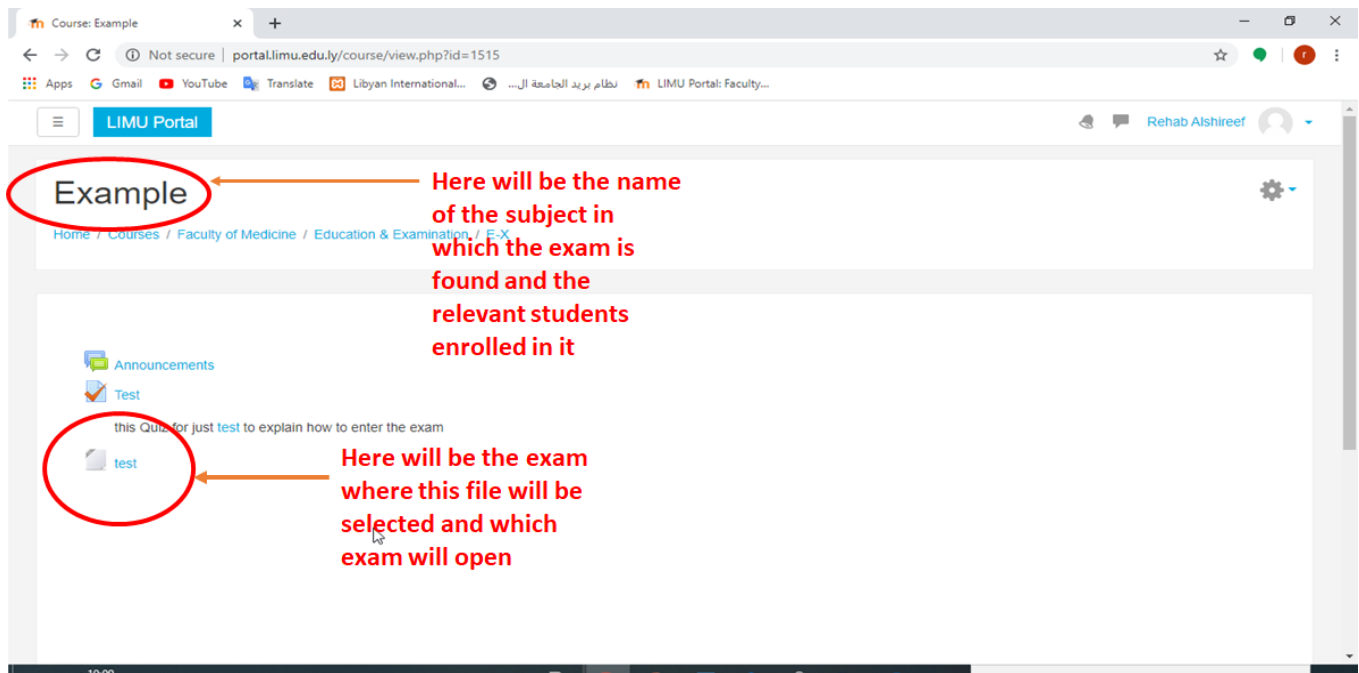
3- Download google meet on mobile and open the university email via this reference in the Picture



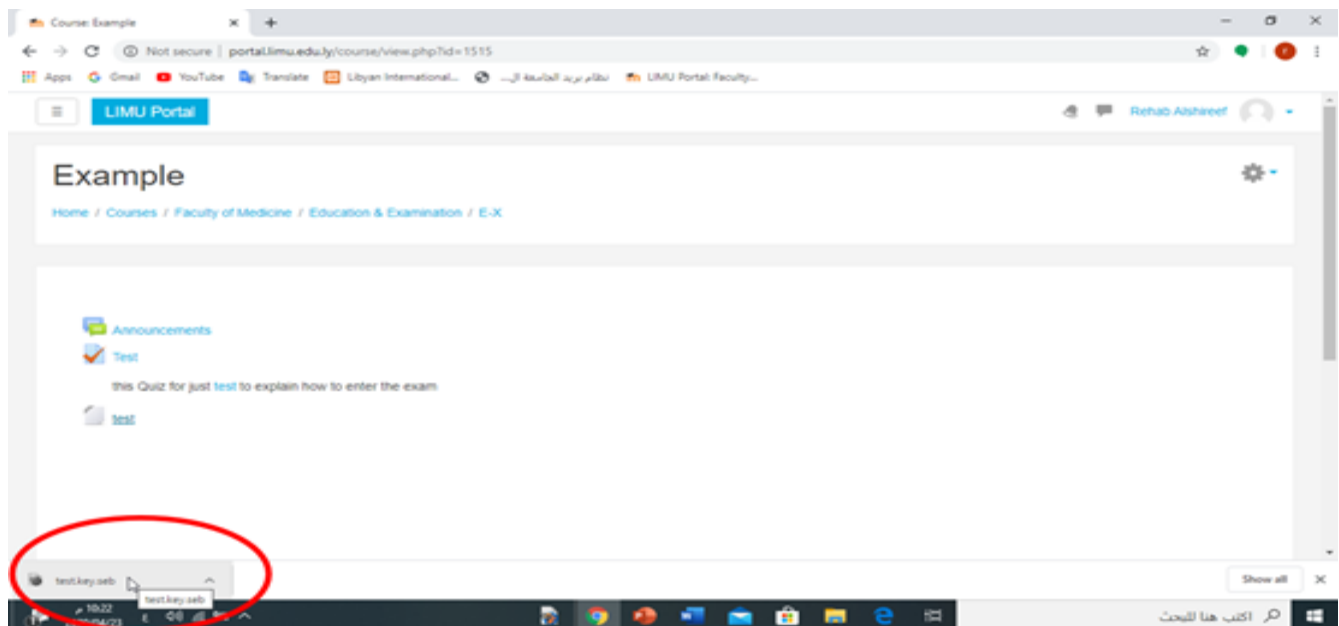
With this, we have finished downloading programs and settings.

4- The examination method is as follows:

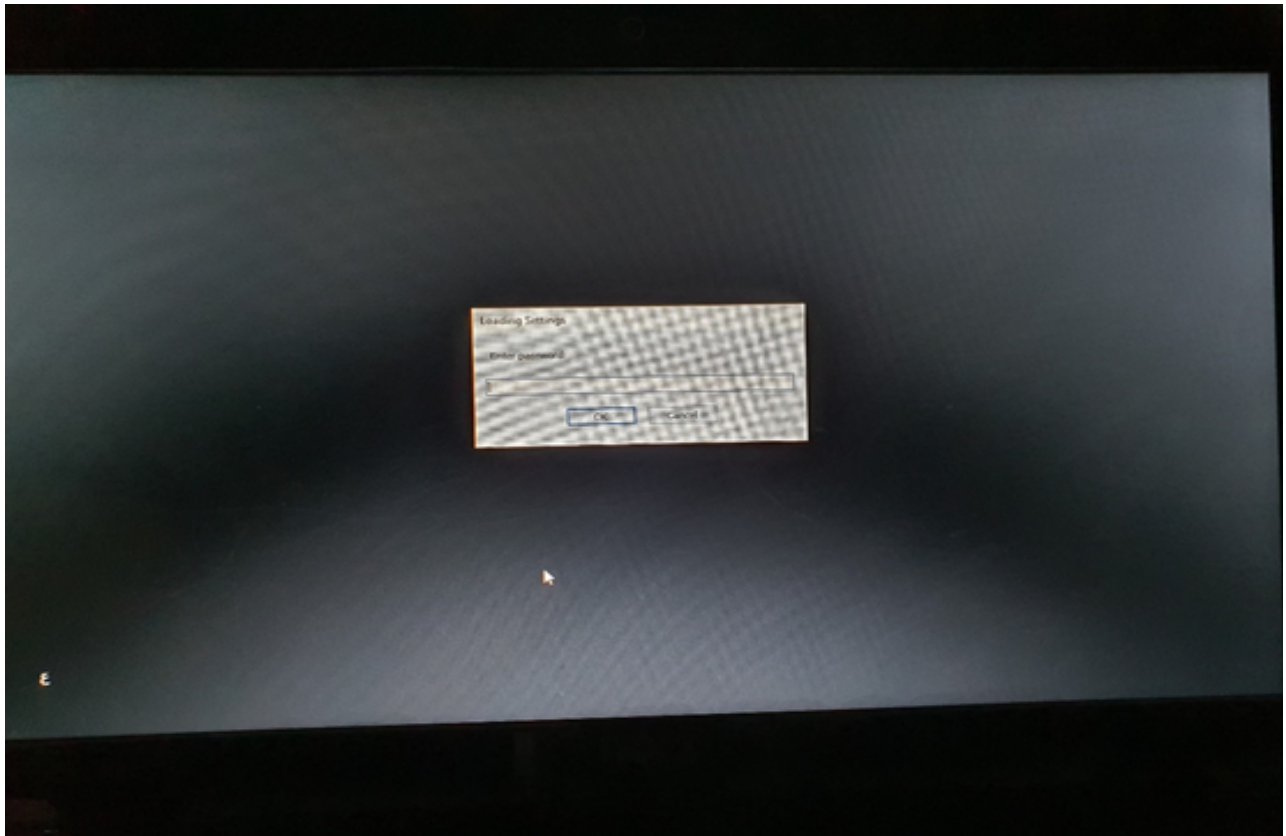
- Opening the model and entering the course in which the exam is located, as in the figure:



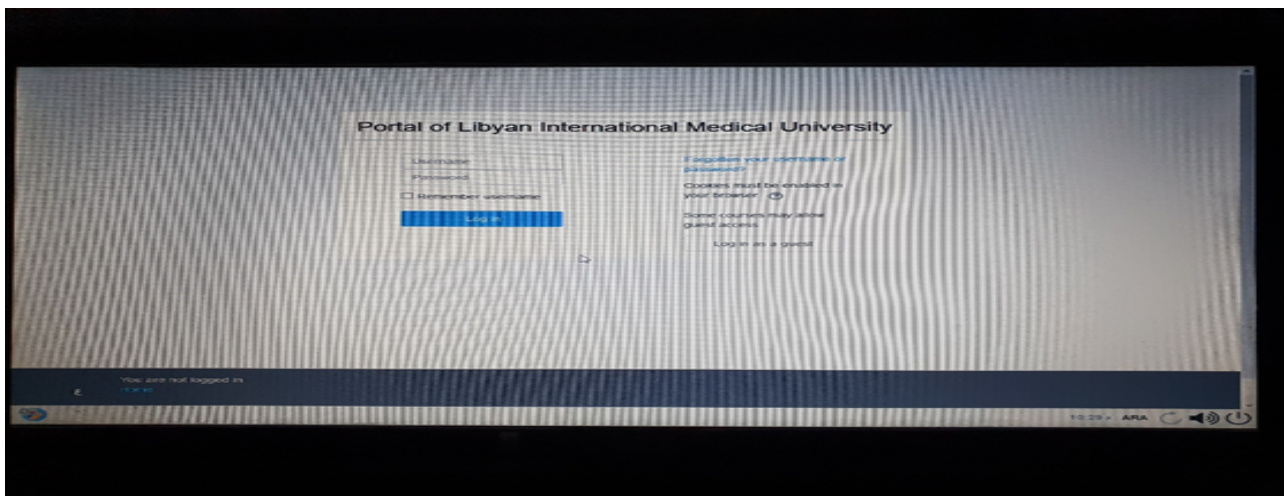
- After clicking on the exam, it will be loaded into the device, after which it will be opened directly as in the following figure:



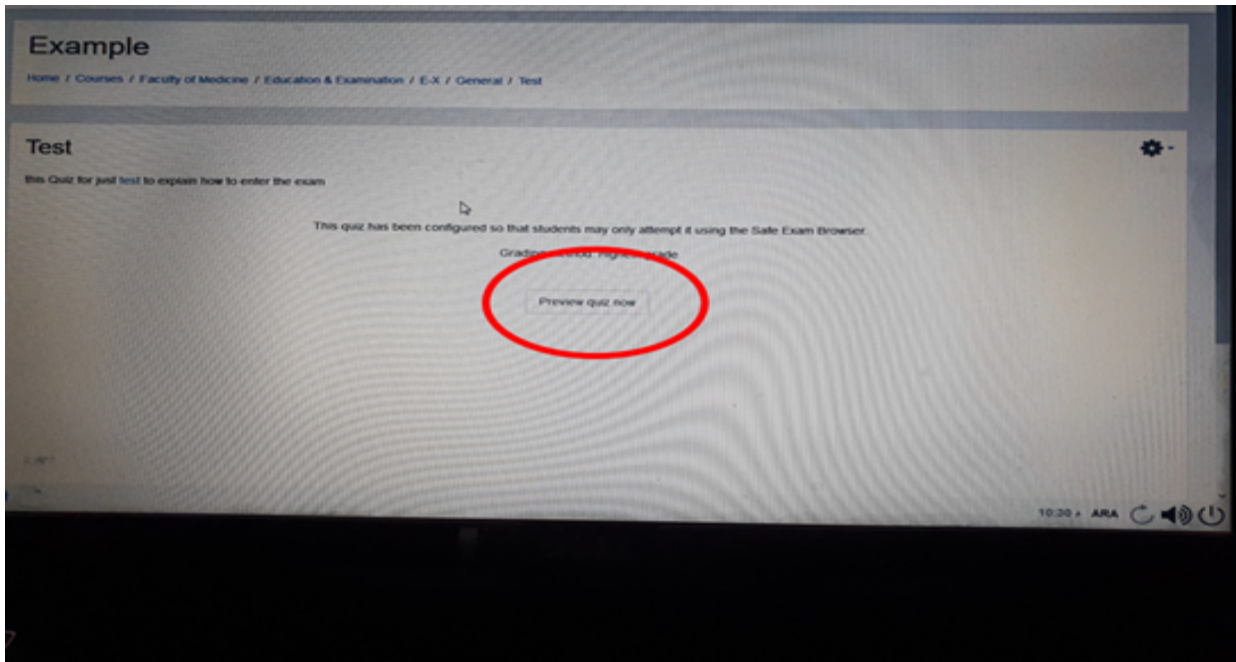
- After opening it, the following screen will appear, in which you will enter a password that will be attached on the day of the examination:



- After entering the password, the following screen will appear in which to enter the username and password for the moodle:



- After that, the exam will start by clicking on preview quiz now so that the questions will appear as follows:

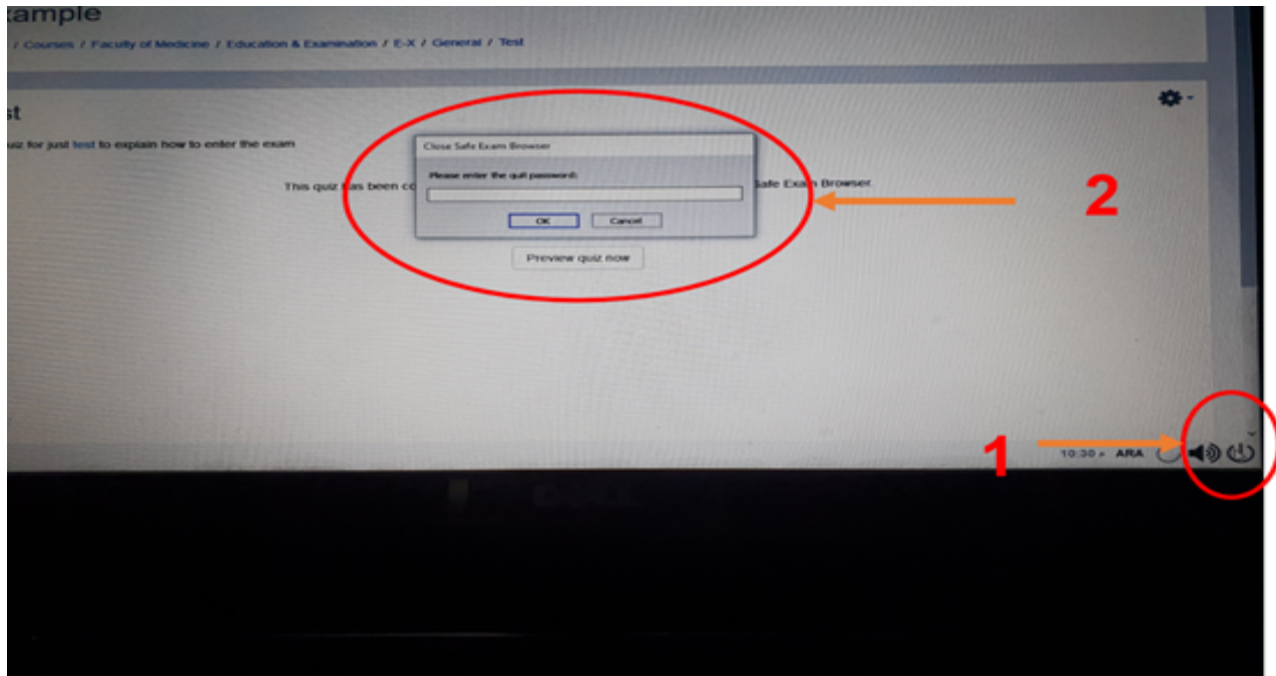


- Each page has one question and when choosing the answer click on the word (check) if there is, then move to the next question:

Important Note:

You cannot move between questions because the answer will be final

- Upon completing the exam, clicking on the program closure icon, which will be executed with a password, is given at the end of the exam, as in the following figure:



Notes:

- 1- Opening the google meet program on the mobile phone as mentioned previously by the university email, and the camera and microphone are opened.
- 2- Putting the mobile in an angle so that the entire room and the student are seen during the exam.
- 3- The meeting code for the google meet program will be sent to the moodle before the start of the exam.
- 4- The exam will only open when the safe exam browser program is loaded on laptop or desktop devices.
- 5- The timing of the exam will be announced at least one day before the exam.
- 6- When the exam is opened, the number of questions and the number of exam hours will appear on the screen.